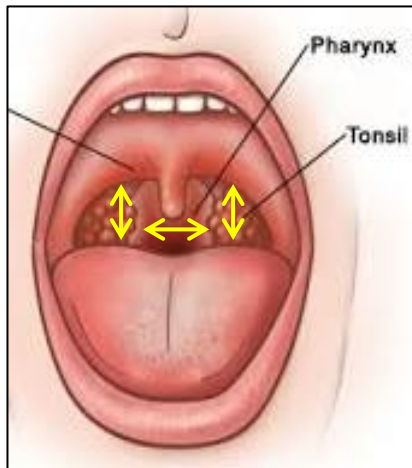




# COLLECTION OF SAMPLES FOR STI SCREEN (MSM)

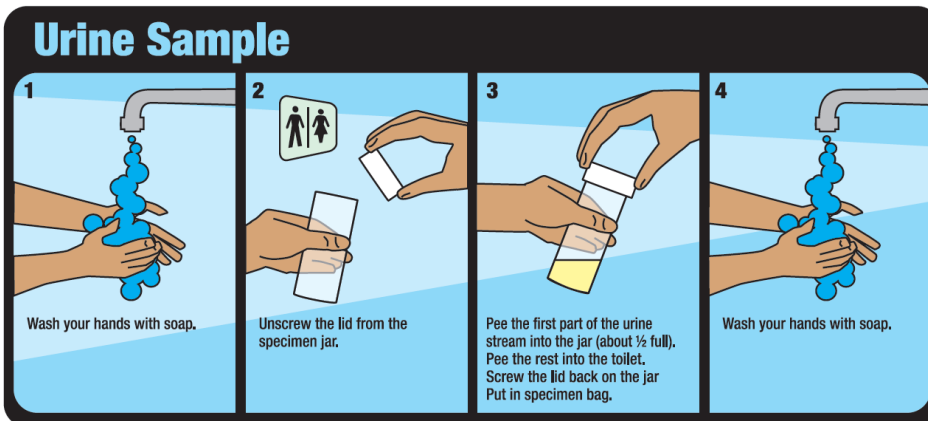
## NAAT/PCR GONORRHOEA AND CHLAMYDIA PHARYNGEAL (THROAT) SWAB



Run swab across tonsils and back of oropharynx.

Use of a tongue depressor may help. Avoid contact with other oral surfaces.

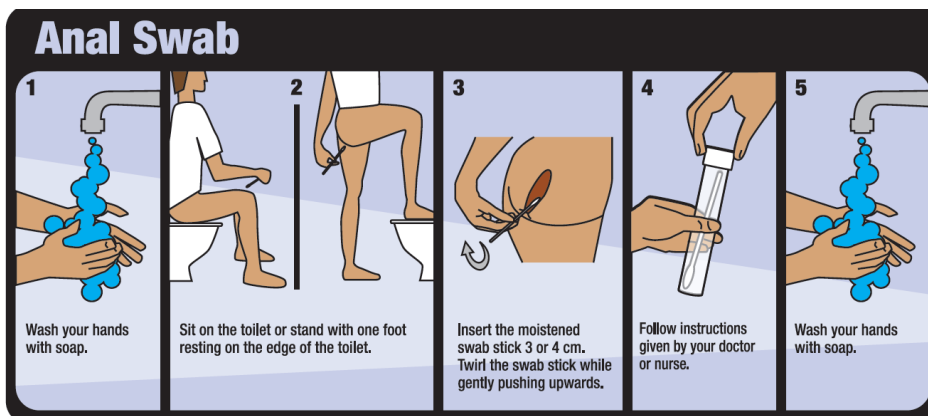
## FIRST PASS URINE SAMPLE NAAT/PCR FOR GONORRHOEA AND CHLAMYDIA



Instruct the patient to collection the first 20 to 30 mls in the jar. Should be first void in at least 20 minutes.

(see patient instruction sheet)

## RECTAL NAAT/PCR SWAB FOR GONORRHOEA AND CHLAMYDIA



Instruct the patient to insert the swab about 3 cm into the anus. Preserve the swab as per instructions \*

\* If using the same type of swab kit for the throat and rectal swab, demonstrate to the patient how to fix the swab in the tube after you have taken the throat swab.