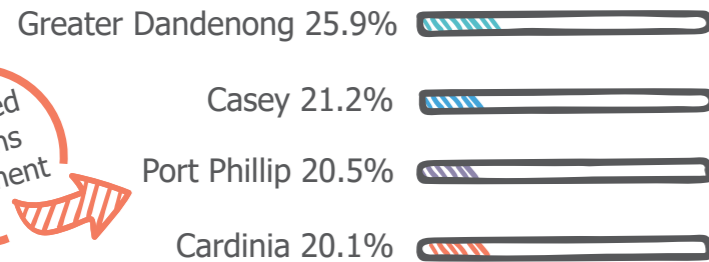


Highest levels of Social Isolation in South East Melbourne LGAs 2014



Suicide is the leading killer of men under the age of 55 in Australia. 3 out of 4 suicides are men



1 in 3 LGBTI Australians report having been in a relationship where the partner is abusive



Hospital admission rates amongst Aboriginal people for preventable conditions are **double the rate** for non-Aboriginal people



One in four women has experienced intimate partner violence



9%

of Aboriginal patients are discharged against medical advice



Homosexual/bisexual Australians are **twice as likely** to have high/very high levels of psychological distress as heterosexual Australians

Any person under the age of 18 years should be cared for as a child

We care for children in a variety of specified services including emergency and trauma, child and youth mental health services and within our outpatient departments



At Alfred Health a **vulnerable person** is someone who may be susceptible to experiencing marginalisation or barriers when receiving their healthcare due to multiple or complex needs and/or someone who is lacking advocacy

In 2015 the ABS estimated that



1.2 million Australians had some level of communication disability

Under the NDIS, around **105,000** Victorians will get access to disability services

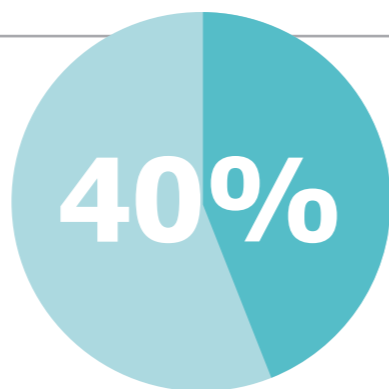
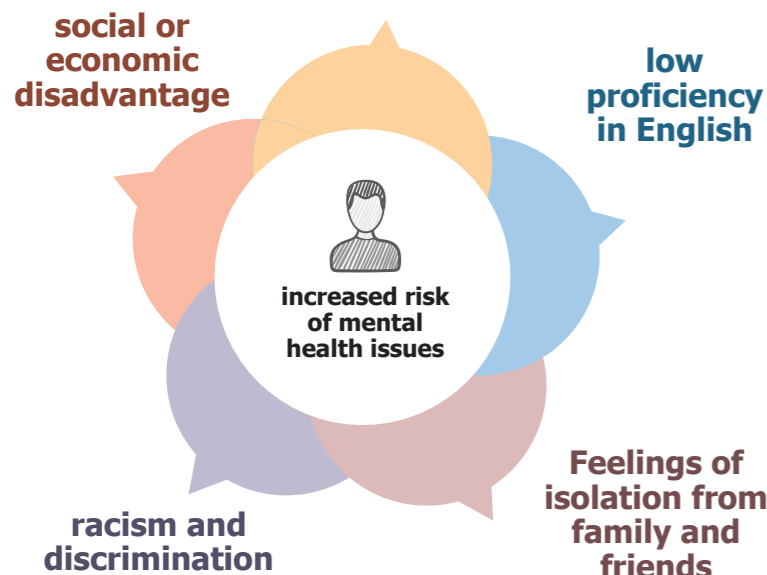
Under the NDIS, around **105,000** Victorians will get access to disability services



In 2015 almost one in five Australians reported living with disability

Who may be a potentially **Vulnerable** patient at Alfred Health?

mental health issues often occur alongside other vulnerabilities



40% of adults have the level of individual health literacy needed to meet the complex demands of everyday life

117,797 episodes of inpatient care 2018-2019



high rates of homelessness in Port Phillip (11.2) per 1000 people

Residents within the Alfred Health catchment area speak **117** different languages



and come from 212 countries

Aboriginal and Torres Strait Islander
Culturally and Linguistically Diverse
Disability
Refugee
Asylum Seeker
Child
Gambling Addiction
LGBTI
Alcohol and Drug use
Homeless
Mental Health issues
Aged
Socially isolated
Lacking an advocate
Family Violence

We aim to respond to vulnerability as part of core business at Alfred Health